

17644





ÖSTERREICHISCHE NATIONALBIBLIOTHEK WIEN

Musik-Sammlung

Signatur: 17.644

Die Benützer werden ersucht, die Spalten 1—5 auszufüllen. — Nach der geltenden Benützensordnung der Österreichischen Nationalbibliothek sind die Benützer verpflichtet, zum Abdruck der vollständigen Handschrift oder größerer Teile derselben und zur Reproduktion der Handschrift oder auch nur einzelner Blätter die Zustimmung der Generaldirektion einzuholen. Von dem Werke, in welchem der Abdruck oder die Wiedergabe erfolgt, sind zwei Freistücke, beziehungsweise nach Vereinbarung die betreffenden Bögen oder Tafeln, bei bloßer Verwertung wird um Angabe des genauen Titels und der betreffenden Seiten der Publikation gebeten.

Frühere Benützen (Akt-Zahl):

Literatur:

© 1880 by Wm. B. Ewing & Co. New York

© 1880 by Wm. B. Ewing & Co. New York

© 1880 by Wm. B. Ewing & Co. New York

© 1880 by Wm. B. Ewing & Co. New York

© 1880 by Wm. B. Ewing & Co. New York

Mittel-Sammlung

1761

Die hier unten stehende Liste der Mittel ist eine Zusammenfassung der Mittel, die im Laufe des Jahres 1761 in der Mittel-Sammlung eingegangen sind. Die Mittel sind nach dem Namen des Gebers geordnet und die Summe der Mittel ist am Ende der Liste angegeben. Die Mittel sind in zwei Spalten angeordnet, die durch eine vertikale Linie getrennt sind. Die linke Spalte enthält den Namen des Gebers und die rechte Spalte die Summe der Mittel.

Folgende Mittel sind eingegangen:

Summe

Cantata à due Voci per servizio delle Serenissime Arciduchesse

Cantano le Medesime in Persona loro.

Musica di

Antonio Caldara.

Archi: Mag:

Germana: il di che splende sagro all'Augusto

Nome dell'Almo Geni: tor, le dotte, e belle Cas=

= talidi sorelle, di chiari spirti accende, e i sagri

voti alle suddite, Genti scuoprano il volto

dei futuri euenti . Per tutto altro non si ode che

penetrare al Ciel feruidi voti, agli alti pregi

suoi tesser corone, e cantar Anni di Verace

lode . E noi che siam sue Figlie cui ne stringe do =

uer, che aperto a lui si mostri il nostro Cor, sol spetta =

trici oggi saram delle premure altrui ?

Aria

La ver = miglia - va = - ga

t:
 rosa or = go = glio = sa fra la pallida fa

= mi = glia delle semplici vio = le spiegar suole piu su =

= per = = = =

= = bo il suo color

a ver = miglia - uaga =
 = rosa - orgo = gliosa fra la palli = da fami = glia
 delle sempli = ci Vio = le spie = gar suole.
 spie = gar suole piu super

This is a handwritten musical score on aged paper, page 31. It consists of six systems of music, each with a vocal line and a piano accompaniment line. The lyrics are written in a cursive hand below the vocal lines. The music is in a key with one sharp (F#) and a common time signature (C). The lyrics are: "a ver = miglia - uaga =", "= rosa - orgo = gliosa fra la palli = da fami = glia", "delle sempli = ci Vio = le spie = gar suole.", and "spie = gar suole piu super". The score includes various musical notations such as notes, rests, slurs, and dynamic markings like "t:".

bo il suo color

Così noi dal popol tolte far dobbiam più chiari, e noti

nostri puri accesi voti all'Augus = = to

La ver = miglia — Va = ga rosa or = go =

= glio = sa fra la pallida fa = mi = glia delle

semplici Vi = ole spiegar suole piu super

bo il suo color

a uer = miglia - vaga - rosa - orgo =

gliosa fra la palli = da fami = glia delle sempli =

= ci vio = le spie = gar suole spie = gar suole

Handwritten musical notation on a five-line staff. It begins with a treble clef and a key signature of one sharp (F#). The notation includes several measures with quarter notes, eighth notes, and rests. There are some markings above the staff, possibly indicating fingerings or ornaments.

piu super

Handwritten musical notation on a five-line staff, continuing from the previous system. It features quarter notes and rests, with some notes marked with a fermata.

Handwritten musical notation on a five-line staff, continuing from the previous system. It features quarter notes and rests, with some notes marked with a fermata.

bo il suo co - lor .

Handwritten musical notation on a five-line staff, continuing from the previous system. It features quarter notes and rests, with some notes marked with a fermata.

Handwritten musical notation on a five-line staff, continuing from the previous system. It features quarter notes and rests, with some notes marked with a fermata.

Handwritten musical notation on a five-line staff, continuing from the previous system. It features quarter notes and rests, with some notes marked with a fermata.

Handwritten musical notation on a five-line staff, continuing from the previous system. It features quarter notes and rests, with some notes marked with a fermata.

Segue .

Handwritten musical notation on a five-line staff, continuing from the previous system. It features quarter notes and rests, with some notes marked with a fermata.

Archi: Allino:  *è ben ragione e lo conosco anch'io; ma*





Archi: Mag:  *tu ben sai, che aborre encomj udir delle sue Glorie. A*



 *queste ui penseran le sagre Muse, auuegg^e coi loro*



 *veli ad occultare il raggio, che uà di primo*



lampo le pupille a ferire, a noi con = uiene

solo manifestar le brame accese nel nostro cor per

Arci: Mino:

Lui, ma cosi pure, e semplici cosi, qual mai po =

Arci: Mag:

tranno il suo guardo inuitar. Col Bel del vero. Non

mira il Geni: tor se non che a quello, ne d'altro si com=

piace, e il uer tu sai quanto semplice, è piu tanto è piu

bello

Arci: Mino:

Aria All:°

Se questo è quel, che piace all'Almo Geni=

= tore, la brama piu ue-race ar-dere a noi nel core

lie = to mirar po = tra

Se ques-to e' quel che pia-ce all' Al-mo Ge-ni-tore la

brama piu uerace ar-dere a noi nel core

lie = = = to mirar - po = trà lie - to mi

= rar mirar - mi = rar potrà

ein quella sua schiettezza co =

= si svelata, e pura l'idea del-la Bel-lezza

tutta vi trouerà

l' Idea della Bel: lezza della Bel: lezza

tutta ui troue = rà ui troue = rà

Se questo e quel che piace all' Almo Geni =

tore la brama più ue-race ar-der a noi nel

core lie = to mirar - po = trà

Se ques-to e quel che pia-ce al=

l'Al-mo Ge-ni-tore la brama più ue-race ar-dere a noi nel

Handwritten musical notation for the first system. The top staff is a vocal line in G major (one flat) with lyrics: "core lie = = = to mirar - po = tra". The bottom staff is a piano accompaniment line. The music features a melodic line with eighth and sixteenth notes and a bass line with quarter and eighth notes.

Handwritten musical notation for the second system. The top staff is a vocal line with lyrics: "lie = to mirar mirar - mi = rar po = tra". The bottom staff is a piano accompaniment line. The music continues with similar melodic and harmonic patterns as the first system.

Handwritten musical notation for the third system. The top staff is a vocal line with a whole rest. The bottom staff is a piano accompaniment line. The music concludes with a final cadence.

Segue.

Archi: Mag:

Si gradita sarà la nostra Cura co=

=si suelata, e pura, che ben uedrai qual uolgerà ri=

=dente uerso di noi la Maestà del guardo dal di cui

moto o placido o seuero lieto gioisce o

sbigottito tremata tutto il soggetto Impero.

Violino Solo

Allegro

L'altro con=

Handwritten musical score on aged paper, featuring two systems of vocal and piano accompaniment. The lyrics are in Italian. The first system includes the lyrics: "tento, che uerrà in noi dagli occhi suo = i". The second system includes the lyrics: "di già lo sento scendere in sen lo sen-to lo". The score is written on five-line staves with treble and bass clefs, and includes various musical notations such as notes, rests, and dynamic markings like "t:".

tento, che uerrà in noi dagli occhi suo = i

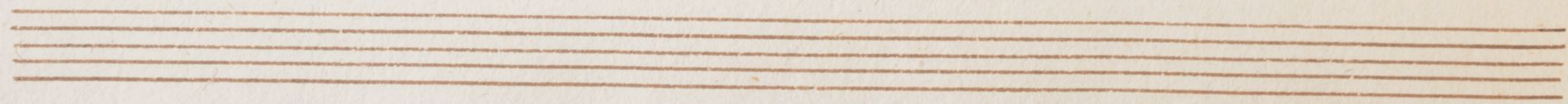
di già lo sento scendere in sen lo sen-to lo

sen- to scen = dere scendere in sen
l'al- mo con-

The image shows a page of handwritten musical notation on aged paper. At the top right, the number '12' is written. The score consists of two systems of staves. The first system has a vocal line on a treble clef staff and a piano accompaniment on a bass clef staff. The second system also has a vocal line on a treble clef staff and a piano accompaniment on a bass clef staff. The lyrics are written below the vocal line. The music features various note values, rests, and dynamic markings such as 't:'. There are also some sharp signs (#) in the piano part. The paper shows signs of age, including some staining and discoloration.

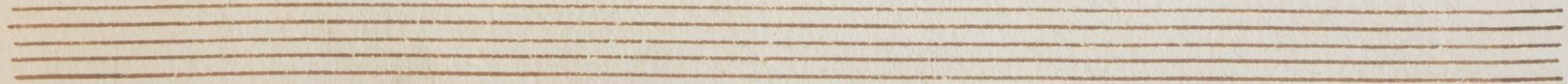
Handwritten musical notation for the first system. It consists of three staves: a vocal line in treble clef and two piano accompaniment staves in bass clef. The lyrics are: = tento che uer=ra in no=i da=gli oc=chi suo=i di già lo

Handwritten musical notation for the second system. It consists of three staves: a vocal line in treble clef and two piano accompaniment staves in bass clef. The lyrics are: sen=to lo sento seen = = dere scendere in sen. There are 't:' markings above the vocal line in the second and third measures of this system.



Handwritten musical notation for the first system. It consists of three staves. The top staff is in treble clef and contains a melodic line with several trills marked with a 't:'. The middle staff is in bass clef and contains a bass line with notes and rests. The bottom staff is in bass clef and contains a bass line with notes and rests. The lyrics 'scen = dere scendere in' are written below the middle staff, with equals signs under 'scen' and 'dere'.

Handwritten musical notation for the second system. It consists of three staves. The top staff is in treble clef and contains a melodic line with several trills marked with a 't:'. The middle staff is in bass clef and contains a bass line with notes and rests. The bottom staff is in bass clef and contains a bass line with notes and rests. The lyrics 'sen' are written below the middle staff.



t: t: t: t:

S'egli è si

dol = ce sol col pen = siero

Handwritten musical score on page 14, featuring vocal lines with lyrics and piano accompaniment. The score is written on five systems of staves. The first system consists of a vocal line and a piano accompaniment line. The second system continues the vocal line with lyrics and the piano accompaniment. The third system shows a vocal line with a fermata over the first measure and the piano accompaniment. The fourth system continues the vocal line with lyrics and the piano accompaniment. The fifth system shows a vocal line with lyrics and the piano accompaniment. The score is written in brown ink on aged paper.

che farà po = i recando intie = ro dagli occhi suo = i

tut = to tutto il suo Ben = che farà po = i recando in =

Handwritten musical score for the first system. It consists of three staves. The top staff is a vocal line in treble clef with a treble clef sign. The middle staff is a piano accompaniment in bass clef. The bottom staff is a piano accompaniment in bass clef. The lyrics are written below the middle staff: "tie-ro dagli occhi suoi tutto tutto il suo Ben!". There are several dynamic markings: "t:" above the first measure of the vocal line, "t:" above the first measure of the piano accompaniment, and "t:" above the second measure of the piano accompaniment. The tempo marking "Adagio" is written above the second measure of the piano accompaniment.

Handwritten musical score for the second system. It consists of three staves. The top staff is a vocal line in treble clef with a treble clef sign. The middle staff is a piano accompaniment in bass clef. The bottom staff is a piano accompaniment in bass clef. The lyrics are written below the middle staff: "tie-ro dagli occhi suoi tutto tutto il suo Ben!". There are several dynamic markings: "t:" above the first measure of the vocal line, "t:" above the first measure of the piano accompaniment, and "t:" above the second measure of the piano accompaniment. The tempo marking "Adagio" is written above the second measure of the piano accompaniment.

Four empty musical staves at the bottom of the page, consisting of two grand staves (treble and bass clefs).

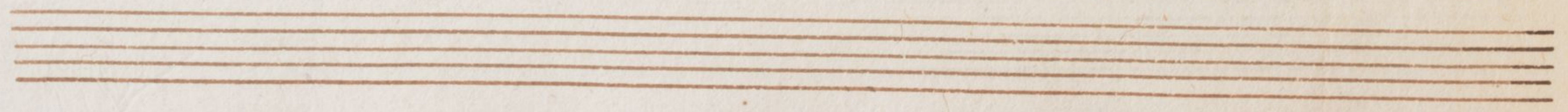
t: t: t: t:
 L'almo contento che uerrà in
 noi dagli occhi suoi di già lo sento

scen = de = re in sen lo sen = to lo sen = to scen

This system contains the first two staves of handwritten musical notation. The top staff is a vocal line in treble clef, and the bottom staff is a piano accompaniment in bass clef. The lyrics "scen = de = re in sen lo sen = to lo sen = to scen" are written between the two staves. The music includes various note values, rests, and dynamic markings such as *t.* (tutti) and *ff* (fortissimo).

= dere scendere in sen

This system contains the next two staves of handwritten musical notation. The top staff is a vocal line in treble clef, and the bottom staff is a piano accompaniment in bass clef. The lyrics "= dere scendere in sen" are written between the two staves. The music continues with various note values, rests, and dynamic markings such as *t.* (tutti).



Handwritten musical notation on a single staff with a treble clef. The key signature has one sharp (F#). The melody consists of several phrases, some with slurs and accents (marked 't:').

Handwritten musical notation on a single staff with a bass clef. The melody is accompanied by the following lyrics: *al=mo con= tento che uer=ra in no=i da=gli occhi*

Handwritten musical notation on a single staff with a treble clef. The melody continues with an accent (marked 't:') over a note.

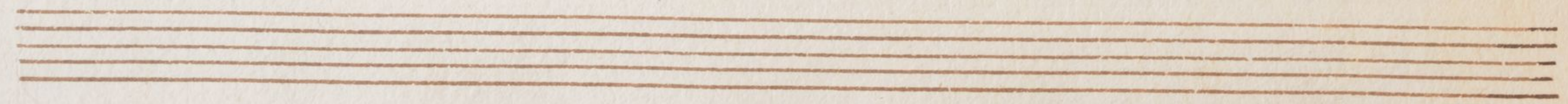
Handwritten musical notation on a single staff with a bass clef. The melody is accompanied by the following lyrics: *suo=i di già lo sen=to lo sento scen = = dere scendere in*

Handwritten musical notation on a single staff with a bass clef. The melody continues with a key signature change to one sharp (F#) indicated by a sharp sign on the F line.

Four empty musical staves at the bottom of the page.

sen scen = = = dere scendere in

sen



Handwritten musical notation for the first system. The top staff is a vocal line in treble clef with a common time signature. It features several trills, each marked with a 't:' above the notes. The bottom two staves are piano accompaniment in bass and tenor clefs, showing a simple harmonic accompaniment.

Archi: Mino:

Handwritten musical notation for the second system. The top staff is a vocal line in treble clef with a common time signature. The lyrics are: "Ma dimmi: e qual potremo spiegar con pochi ac-". The bottom two staves are piano accompaniment in bass and tenor clefs, showing a simple harmonic accompaniment.

centi del feruido desir le brame ardenti, che abbiam per lui nel

Handwritten musical notation for the third system. The top staff is a vocal line in treble clef with a common time signature. The lyrics are: "centi del feruido desir le brame ardenti, che abbiam per lui nel". The bottom two staves are piano accompaniment in bass and tenor clefs, showing a simple harmonic accompaniment.

Arci: Mag:

core. Il core istesso tor la lingua saprà d'ogni pe =

Arci: Mino

= riglio, ch'è in = terprete fedel tra Padre e Figlio. e

Arci: Mag:

qual de nostri voti ei ne farà primiero. A

Lui non manca lume per far la scelta; avrà ben cura di

ritrouar sollecito, e spe: dito, il voto piu per=

=fetto e piu gradito

Arci: Mino:

Aria

Se

da se stesso sce=gliere il core ne puo il migliore al cor si

lasci la liber = tà la liber = tà al cor si lasci la liber =

= tà - la liber = tà se da se stesso sce =

-gliere il core ne può il migliore. al cor si lasci la liber =

= tà = al cor si lasci si lasci la liber = tà = la

liber = tà

Che il

più gradi = to dei nos = tri voti coi primi

moti con cui ne tocca poi sulla boc = ca ci por = te =

= rà - si porte = rà

poi sulla bocca ci por-te-ra

ci por-te-ra

Se da se stesso sce-gliere il

core ne può il migliore al cor si lasci la liber-tà la liber-

= ta al cor si lasci la liber= ta — la liber = ta

Se da se stesso scegliere il core ne puo il migliore

al cor si lasci la liber= ta — al cor si

lasci si lasci la liber= ta — la liber = ta



Archi: Mag:

Dunque non più dimora; andiam sul =

l'ali di sì dolce desir portate a volo; e in fra la

Turba che in suo onor festeggia nostro pensier si ueggia

nelle sembianze sue piu scielte, e belle splendor qual

Archi: Mino:
sol fra le minute, stelle. Si si, ne andiamo

pur pria, che si accolga tumultuario il Popol desi =

=oso, che per letizia scuote talor del freno il

morso. Tu ben sai, che intorno al Genitore
fa, qual d'Api uno stuol d'intorno al fiore.

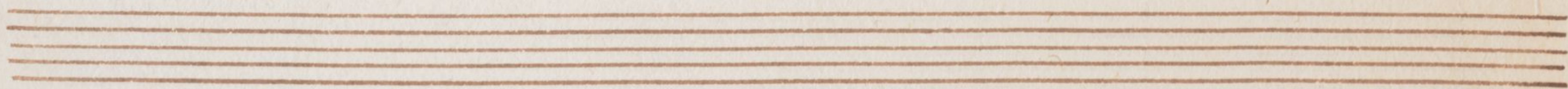
a Due

Andiamo al con: tento, che piu, che
Andiamo al con: tento, che

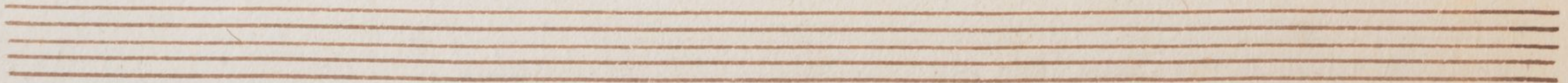
più si sos-pira se man-ca l'accen-to
 più si sos-pira Se il la:bro si

il cor-ch'è saga-ce per noi per noi parle-
 ta-ce il cor-ch'è saga-ce per noi parle-

Handwritten musical score for the first system. It consists of three staves. The top staff is a vocal line with lyrics: "ra" followed by "per noi - parlerà". The middle staff is a piano accompaniment line with lyrics: "ra" followed by "per noi - parlerà". The bottom staff is a bass line. The music is written in a cursive style with various note values and rests.



Handwritten musical score for the second system. It consists of three staves. The top staff is a vocal line with lyrics: "Andiamo al contento al contento, che più - si sos-pira". The middle staff is a piano accompaniment line with lyrics: "Andiamo al contento" followed by "che più - si sos-pira". The bottom staff is a bass line. The music is written in a cursive style with various note values and rests.



se manca l'accento il cor ch'è saga = ce saga =
 Se il labro si tace il cor ch'è saga = ce saga =

= ce per noi parlerà = = per noi per noi parle = rà
 = ce per noi parlerà = = per noi per noi parle = rà

e il bello del vero il
nel ver che di: letta sua

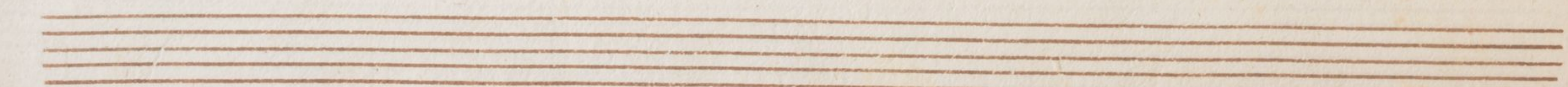
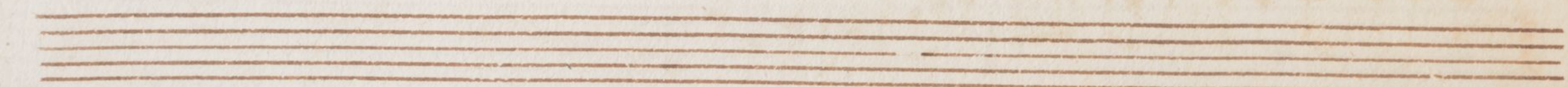
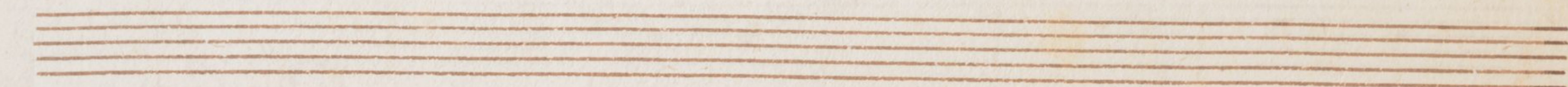
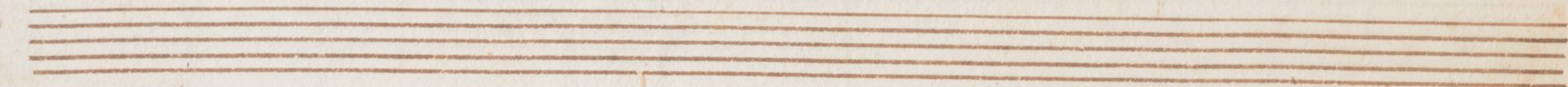
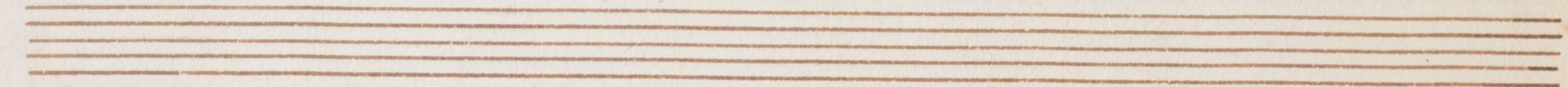
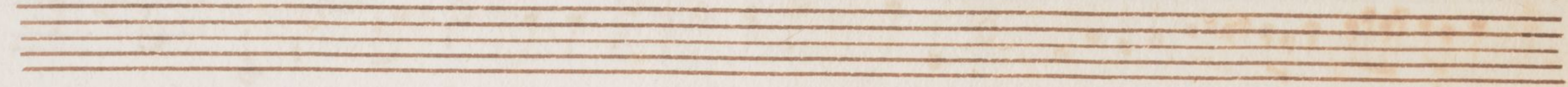
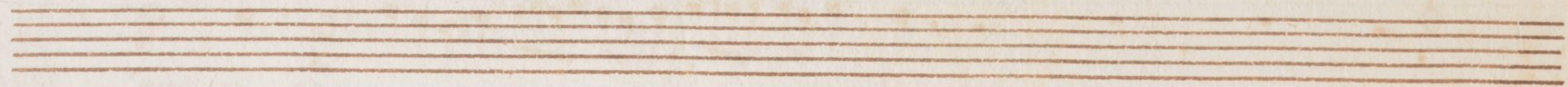
nostro pensie = ro piu gra = to fa =
scelta perfet = ta il cor far po = tra far - po =

= rà *più gra* = to *farà*

= trà il cor far potrà

Da Capo

Fine.



24 pl

ÖNB



+Z19113230X

