

Soprano Solo

Woe Where Such Hate (the Third Part)

No. 6 of Songs of Sadness for the Viols & Voice

Thomas Greaves (fl1604)

5



Woe, Woe, woe where such

Detailed description: This block contains the first line of music, measures 5 through 8. It begins with a treble clef, a key signature of one flat (B-flat), and a 4/4 time signature. A fermata is placed over the first measure. The melody consists of a half rest, followed by a half note G4, a quarter note A4, a quarter note B-flat4, a half note C5, and a half note B-flat4.


9



hate doth no such love al - lure: Woe, woe where such

Detailed description: This block contains the second line of music, measures 9 through 12. The melody continues from the previous line. It features a dotted quarter note G4, an eighth note A4, a quarter note B-flat4, a quarter note C5, a half note B-flat4, a half note A4, a quarter note G4, a quarter note F4, a half note E4, a half note D4, a quarter note C4, a quarter note B3, a half note A3, and a half note G3.

13



grief doth make no hope pro- ceed, Woe, woe

Detailed description: This block contains the third line of music, measures 13 through 16. The melody continues with a quarter note G3, a quarter note F3, a half note E3, a quarter note D3, a quarter note C3, a half note B2, a half note A2, a quarter note G2, a quarter note F2, a half note E2, a half note D2, a quarter note C2, a quarter note B1, a half note A1, and a half note G1.


17



where such dread doth no such joy pro-cure, Woe where such shame doth

Detailed description: This block contains the fourth line of music, measures 17 through 20. The melody continues with a quarter note G1, a quarter note F1, a half note E1, a quarter note D1, a quarter note C1, a half note B0, a half note A0, a quarter note G0, a quarter note F0, a half note E0, a half note D0, a quarter note C0, a quarter note B-1, a half note A-1, a half note G-1, a quarter note F-1, a quarter note E-1, a half note D-1, a half note C-1, a quarter note B-1, a quarter note A-1, a half note G-1, and a half note F-1.

21



no such so - lace breed: Woe, woe where no hate, no

Detailed description: This block contains the fifth line of music, measures 21 through 24. The melody continues with a quarter note G-1, a quarter note F-1, a half note E-1, a quarter note D-1, a quarter note C-1, a half note B-1, a half note A-1, a quarter note G-1, a quarter note F-1, a half note E-1, a half note D-1, a quarter note C-1, a quarter note B-1, a half note A-1, a half note G-1, a quarter note F-1, a quarter note E-1, a half note D-1, and a half note C-1.

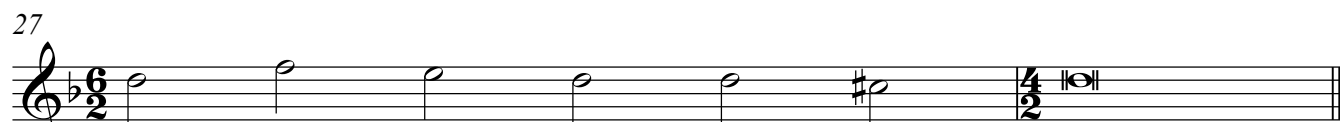
25



grief, no dread, no shame, Doth nei- ther

Detailed description: This block contains the sixth line of music, measures 25 and 26. The melody continues with a quarter note G-1, a quarter note F-1, a half note E-1, a quarter note D-1, a quarter note C-1, a half note B-1, a half note A-1, a quarter note G-1, a quarter note F-1, a half note E-1, a half note D-1, a quarter note C-1, a quarter note B-1, a half note A-1, a half note G-1, a quarter note F-1, a quarter note E-1, a half note D-1, and a half note C-1. The piece concludes with a double bar line and a 6/2 time signature.

27



love, hope, joy, or so - lace frame.

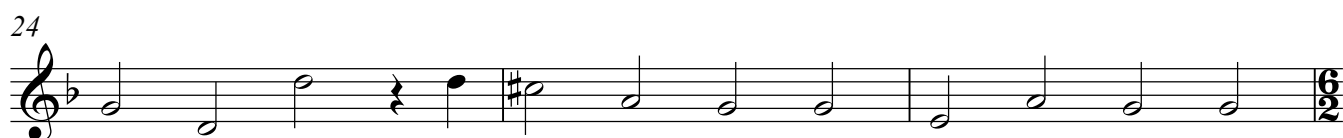
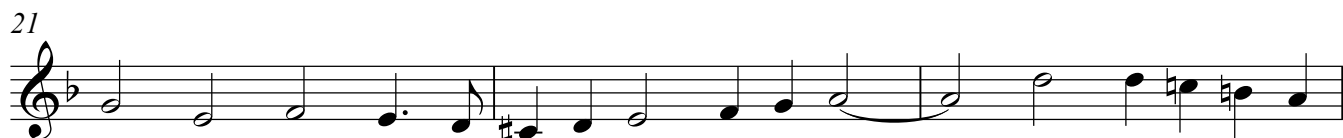
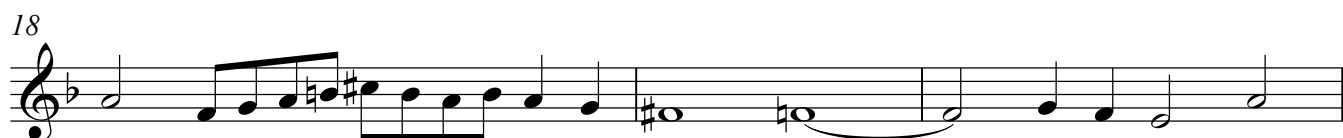
Detailed description: This block contains the seventh line of music, measures 27 through 30. The melody continues with a quarter note G-1, a quarter note F-1, a half note E-1, a quarter note D-1, a quarter note C-1, a half note B-1, a half note A-1, a quarter note G-1, a quarter note F-1, a half note E-1, a half note D-1, a quarter note C-1, a quarter note B-1, a half note A-1, a half note G-1, a quarter note F-1, a quarter note E-1, a half note D-1, and a half note C-1. The piece concludes with a double bar line and a 4/2 time signature.

Treble Viol

Woe Where Such Hate (the Third Part)

No. 6 of Songs of Sadness for the Viols & Voice

Thomas Greaves (fl1604)

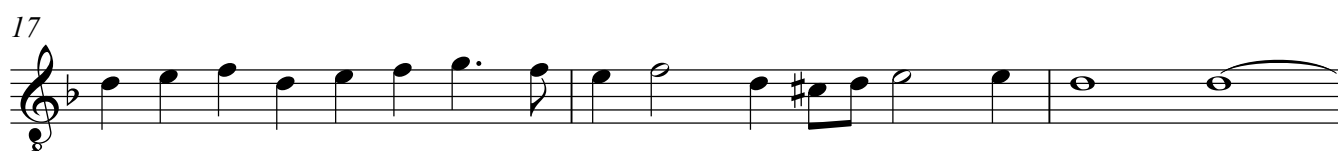
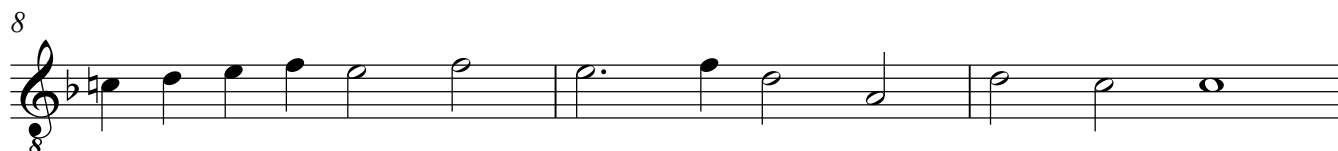


Tenor Viol 1

Woe Where Such Hate (the Third Part)

No. 6 of Songs of Sadness for the Viols & Voice

Thomas Greaves (fl1604)



Tenor Viol 1

Woe Where Such Hate (the Third Part)

No. 6 of Songs of Sadness for the Viols & Voice

Thomas Greaves (fl1604)

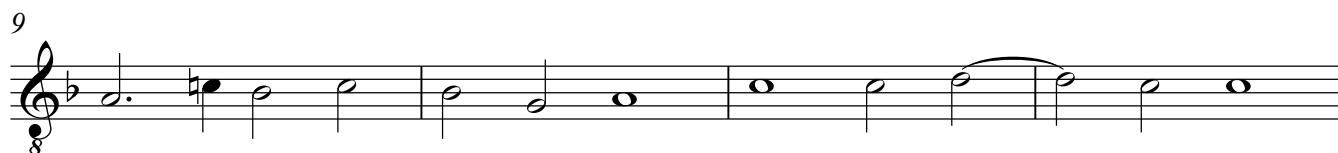


Tenor Viol 2

Woe Where Such Hate (the Third Part)

No. 6 of Songs of Sadness for the Viols & Voice

Thomas Greaves (fl1604)



Tenor Viol 2

Woe Where Such Hate (the Third Part)

No. 6 of Songs of Sadness for the Viols & Voice

Thomas Greaves (fl1604)

