

142  
Io non bado al volto al grado

Scena e Polacca

Del sig.<sup>ro</sup> Ferdinando Per

In Firenze nella Copisteria di Musica Manzuoli Meucci, e Compagni in faccia alle Scalere di Badia. f. 7

144

144-

*Violini*

Violini

Handwritten musical notation for Violini, starting with a treble clef, a common time signature, and a dynamic marking of *p*. The notation features a complex, fast-moving melodic line with many sixteenth and thirty-second notes.

Violoncello

Handwritten musical notation for Violoncello, featuring a treble clef, a common time signature, and a dynamic marking of *p*. The notation includes rests and a triplet of sixteenth notes.

*Viola*

Viola

Handwritten musical notation for Viola, featuring a treble clef, a common time signature, and a dynamic marking of *p*. The notation includes a whole rest and a double bar line.

Flauti

Handwritten musical notation for Flauti, featuring a treble clef, a common time signature, and a dynamic marking of *p*. The notation includes rests and a melodic line starting in the second measure.

Clarineti

Handwritten musical notation for Clarineti, featuring a treble clef, a common time signature, and a dynamic marking of *p*. The notation includes rests and a melodic line starting in the second measure.

*Oboe*

Oboe

Handwritten musical notation for Oboe, featuring a treble clef, a common time signature, and a dynamic marking of *p*. The notation includes rests and a melodic line starting in the second measure.

*Cori*

Cori

Handwritten musical notation for Cori, featuring a treble clef, a common time signature, and a dynamic marking of *p*. The notation includes rests and a melodic line starting in the second measure.

*Fagotti*

Fagotti

Handwritten musical notation for Fagotti, featuring a bass clef, a common time signature, and a dynamic marking of *p*. The notation includes rests and a melodic line starting in the second measure.

*Martelloni*

Martelloni

Handwritten musical notation for Martelloni, featuring a bass clef, a common time signature, and a dynamic marking of *p*. The notation includes rests and a melodic line starting in the second measure.

*Organo*

Organo

Handwritten musical notation for Organo, featuring a C-clef, a common time signature, and a dynamic marking of *p*. The notation includes rests and a melodic line starting in the second measure.

*Sciolto*

*Gri:*

*all:°*

*e poteste voi dubitare*

*setta ogni mio cenno non se tu pronta ad obbedir*

*eb:*

*all:°*

The first part of the page contains ten staves of handwritten musical notation. The notation includes various note values, rests, and bar lines, typical of an 18th-century manuscript. The first staff begins with a treble clef and a key signature of one sharp (F#). The music is written in a style characteristic of the Baroque or early Classical periods.

The second part of the page features a vocal line with lyrics and a corresponding bass line. The lyrics are written in a cursive hand and read: *ben a t'è fra poco la Duchessa verrà' ciò ch'impone e mio vo:*. The musical notation includes a treble clef, a key signature of one sharp, and various note values and rests. The lyrics are positioned below the vocal line, and the bass line is written on a separate staff below the lyrics.

*Adagio*

*Presto*

*obbediro'*

*ter*

*Sospiri*

*parla*

*cos'*

*and:*

*Presto*

Handwritten musical notation for the first system, consisting of three staves. The top staff is a treble clef with a key signature of one flat (B-flat) and a common time signature. It contains several notes, including a half note G4, a quarter note A4, and a quarter note B4. The middle and bottom staves are bass clefs, with the middle staff containing notes like G3, F3, and E3. There are various musical symbols such as slurs, accents, and dynamic markings like 'f' and 'p'.

Five empty musical staves, likely representing a continuation of the piece or a section where the notation is obscured or missing.

Handwritten musical notation for the third system, including lyrics. The lyrics are written in a cursive hand: *Deh p' pietà scusate una povera Donna che fu*. The word *hai* is written below the first staff. The notation includes notes, rests, and dynamic markings like 'f' and 'p'.

*adagio*

Musical staff with notes and a dynamic marking 'f'.

Musical staff with notes and a dynamic marking 'f'.

Musical staff with notes and a dynamic marking 'f'.

Empty musical staff.

Empty musical staff.

Empty musical staff.

Empty musical staff.

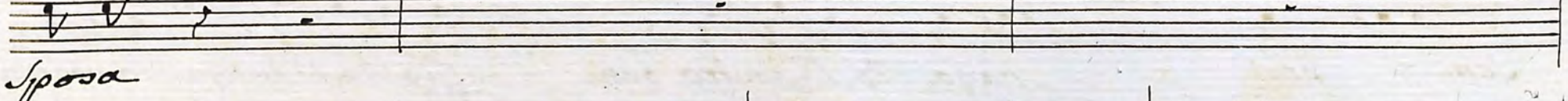
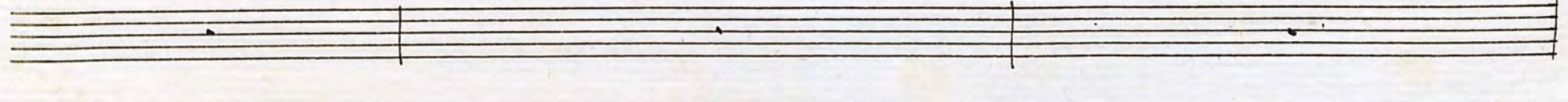
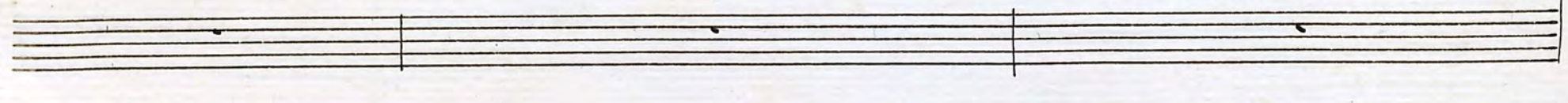
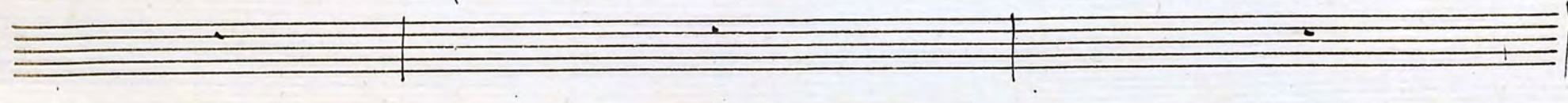
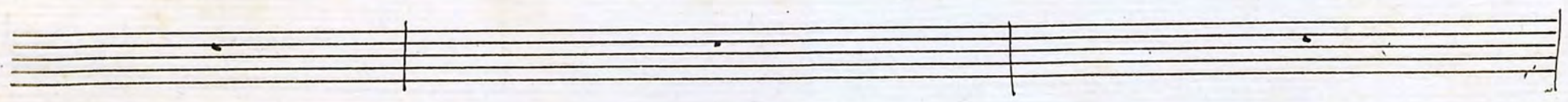
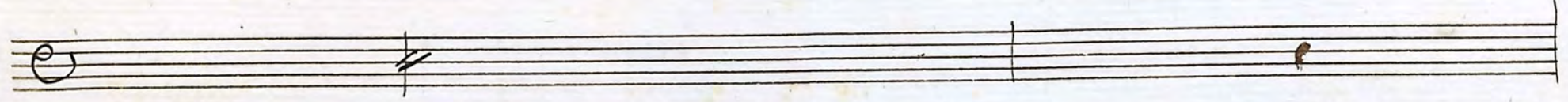
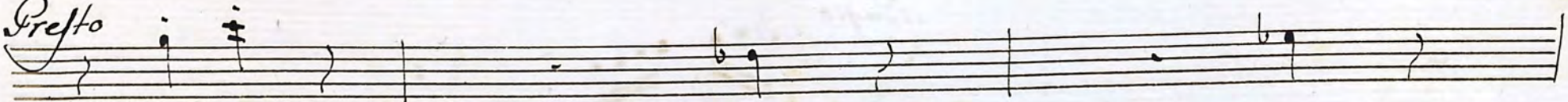
*Sem = pre* *vaga del vostro ben* *fisetta, e dunque la vostra*

Musical staff with lyrics and notes.

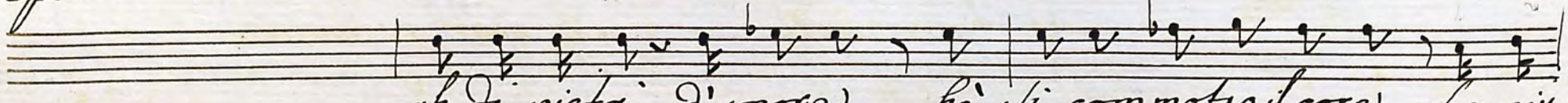
Musical staff with notes and a dynamic marking 'adagio'.

*adagio*

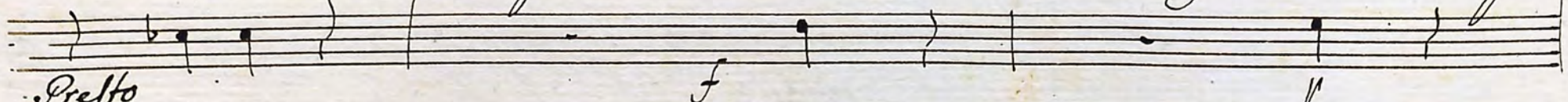
8  
*Presto*



*Sposa*



ah di piet  d'amore h  si commosso il core che piu'



*Presto*

*f*





Handwritten musical notation on a five-line staff. It begins with a treble clef and a key signature of one flat (B-flat). The notation includes a series of notes and rests, with some notes beamed together.

Handwritten musical notation on a five-line staff, continuing the piece with notes and rests.

Handwritten musical notation on a five-line staff, starting with a double bar line and slash, followed by notes and rests.

A five-line musical staff that is mostly empty, with only a few faint notes visible.

A five-line musical staff that is mostly empty, with only a few faint notes visible.

A five-line musical staff that is mostly empty, with only a few faint notes visible.

A five-line musical staff that is mostly empty, with only a few faint notes visible.

Handwritten musical notation on a five-line staff, featuring a series of notes and rests.

*non vi turbate) Deh Signor perdonate*

Handwritten musical notation on a five-line staff, featuring a series of notes and rests.

*finger non so*

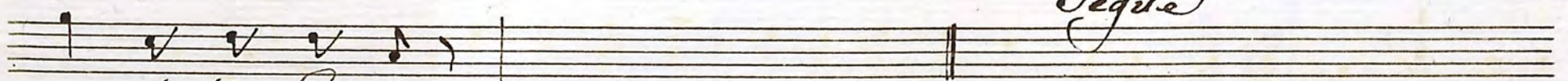
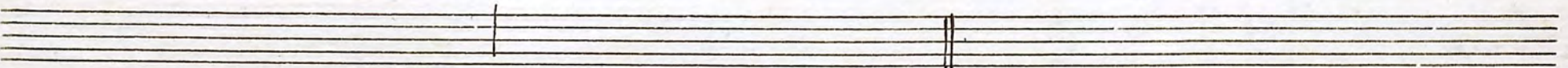
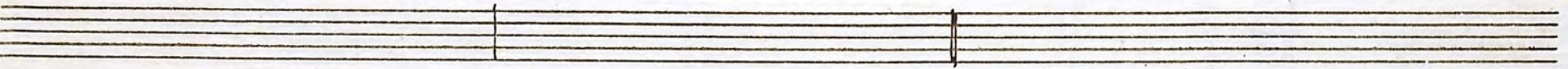
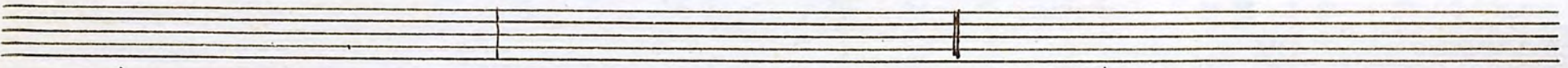
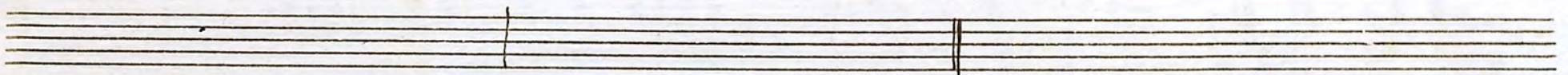
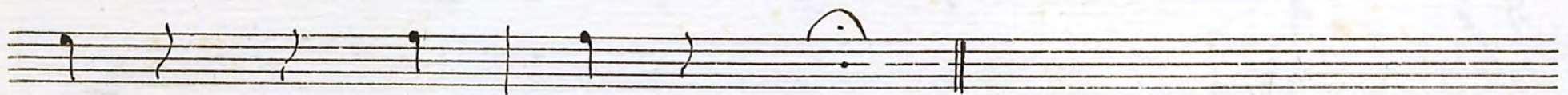
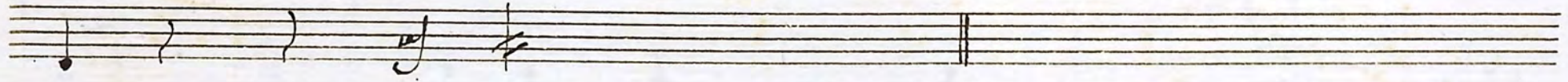
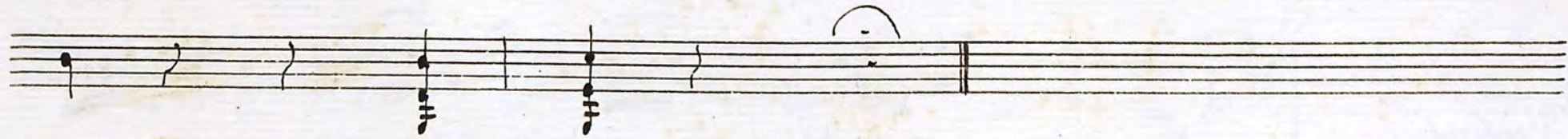
Handwritten musical notation on a five-line staff, featuring a series of notes and rests.

*or*

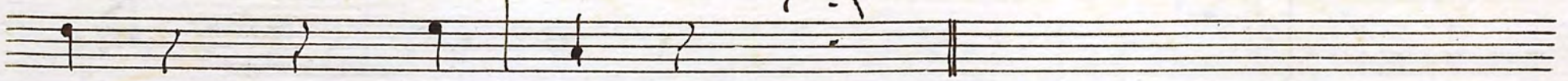
ou' l'accheta la sposa mia fra poco ti mostrero' non son si sciocco o

Strano di sposarmi a costei  
 quella che ho scelto conoscerai che

*Serba in petto un core ch'è per mè tutta fede ch'è per mè tutta fede*



*e tutto ardore*



*Violini*

*Viola*

*Flauti*

*Oboe*

*Clarineti*

*Fagotti*

*Marceffe*

*Tempo di Polacca*

A handwritten musical score consisting of ten staves. The notation includes various musical symbols such as notes, rests, and accidentals. The first staff features a melodic line with eighth and sixteenth notes, some beamed together. The second and third staves appear to be accompaniment, with the third staff showing a series of chords. The fourth staff contains a complex chordal structure with many notes. The fifth staff has a few notes with a fermata. The sixth and seventh staves show more complex chordal patterns. The eighth and ninth staves are mostly empty, with some rests and a double bar line. The tenth staff continues the melodic line from the first staff. The paper is aged and shows some staining.

Handwritten musical notation on a five-line staff. It begins with a treble clef and a common time signature. The notation includes quarter notes, eighth notes, and sixteenth notes, some with beams. There are also rests and a double bar line with repeat dots.

Handwritten musical notation on a five-line staff. It begins with a treble clef and a common time signature. The notation includes quarter notes and rests, with a double bar line and repeat dots.

Handwritten musical notation on a five-line staff. It begins with a treble clef and a common time signature. The notation includes quarter notes and rests, with a double bar line and repeat dots.

Handwritten musical notation on a five-line staff. It begins with a treble clef and a common time signature. The notation includes quarter notes and rests, with two instances of chords indicated by slanted lines. There are also double bar lines and repeat dots.

Handwritten musical notation on a five-line staff. It begins with a treble clef and a common time signature. The notation includes quarter notes and rests, with two instances of chords indicated by slanted lines. There are also double bar lines and repeat dots.

Handwritten musical notation on a five-line staff. It begins with a treble clef and a common time signature. The notation includes quarter notes and rests.

Handwritten musical notation on a five-line staff. It begins with a treble clef and a common time signature. The notation includes quarter notes and rests.

Handwritten musical notation on a five-line staff. It begins with a treble clef and a common time signature. The notation includes quarter notes and rests, with a double bar line and repeat dots.

Handwritten musical notation on a five-line staff. It begins with a treble clef and a common time signature. The notation includes quarter notes and rests.

Handwritten musical notation on a five-line staff. It begins with a treble clef and a common time signature. The notation includes quarter notes and rests, with a double bar line and repeat dots. The instruction "p. leg." is written below the staff.



This page of handwritten musical notation consists of ten staves. The notation includes various rhythmic values, slurs, and dynamic markings. A 'soli' marking is written on the fifth staff. The page is numbered '17' in the top right corner and '9' in the bottom right corner. The music appears to be a single melodic line with some accompaniment, possibly for a violin or flute.

Handwritten musical notation on a single staff. It begins with a quarter note, followed by a group of four eighth notes beamed together. A slur covers a quarter note and a group of four eighth notes. This is followed by a quarter note, a half note, and a group of four eighth notes beamed together. The staff ends with a quarter note, a group of four eighth notes beamed together, and another group of four eighth notes beamed together.

Handwritten musical notation on a single staff. It starts with a treble clef, followed by a quarter rest, a double bar line, and then a quarter note, a half note, and a quarter note.

Handwritten musical notation on a single staff. It starts with a common time signature (C), followed by a quarter rest, a double bar line, and then a quarter note, a half note, and a quarter note.

Handwritten musical notation on a single staff. It features a complex chord structure with multiple notes beamed together, followed by a quarter note, a double bar line, and then two chords, each consisting of multiple notes beamed together.

Handwritten musical notation on a single staff. It starts with a '3' and a double bar line, followed by a quarter note, a double bar line, and then a quarter note, a half note, and a quarter note.

Handwritten musical notation on a single staff. It features a complex chord structure with multiple notes beamed together, followed by a quarter note, a double bar line, and then two chords, each consisting of multiple notes beamed together.

Handwritten musical notation on a single staff. It features a complex chord structure with multiple notes beamed together, followed by a quarter note, a double bar line, and then two chords, each consisting of multiple notes beamed together.

Handwritten musical notation on a single staff, mostly blank with some faint lines and a double bar line.

Handwritten musical notation on a single staff, mostly blank with some faint lines and a double bar line.

Handwritten musical notation on a single staff. It features various note values, including quarter notes, eighth notes, and slurs, ending with a quarter note and a double bar line.

A handwritten musical score consisting of ten staves. The notation is dense and includes various musical symbols such as notes, rests, and dynamic markings. The first staff features several measures with notes and rests, some enclosed in parentheses. The second staff continues with similar notation, including a measure with a long horizontal line. The third staff has a measure with a circled note. The fourth staff contains a measure with a circled note and a measure with a circled note and a circled note. The fifth staff has a measure with a circled note. The sixth staff has a measure with a circled note. The seventh staff has a measure with a circled note. The eighth staff has a measure with a circled note. The ninth staff has a measure with a circled note. The tenth staff has a measure with a circled note. The notation is written in black ink on aged, slightly yellowed paper.

Handwritten musical notation on a single staff. It begins with a quarter note, followed by a half rest, then a quarter note, a half note, and another quarter note. The staff concludes with a double bar line and a slash.

Handwritten musical notation on a single staff. It consists of six groups of beamed eighth notes, followed by a quarter rest and a double bar line with a slash.

Handwritten musical notation on a single staff. It starts with a treble clef and a sharp sign, followed by a double bar line and a slash.

Handwritten musical notation on a single staff. It features a sequence of notes and rests: a quarter note, a half rest, a quarter note, a half note, a quarter note, and a quarter note. The staff ends with a double bar line and a slash.

Handwritten musical notation on a single staff. It features a sequence of notes and rests: a quarter note, a half rest, a quarter note, a half note, a quarter note, and a quarter note. The staff ends with a double bar line and a slash.

Handwritten musical notation on a single staff. It features a sequence of notes and rests: a quarter note, a half rest, a quarter note, a half note, a quarter note, and a quarter note. The staff ends with a double bar line and a slash.

Handwritten musical notation on a single staff. It features a sequence of notes and rests: a quarter note, a half rest, a quarter note, a half note, a quarter note, and a quarter note. The staff ends with a double bar line and a slash.

A blank musical staff with five lines.

A blank musical staff with five lines.

Handwritten musical notation on a single staff. It features a sequence of beamed eighth notes, followed by a quarter note and a quarter note. The staff ends with a double bar line and a slash.

Handwritten musical score for the first system, consisting of seven staves. The top two staves contain melodic lines with notes and rests. The middle three staves are mostly empty, with some initial notes on the left. The bottom staff has a double bar line.

Handwritten musical score for the second system, consisting of two staves. The top staff has lyrics written below it. The bottom staff contains accompaniment notes.

*Io non bado al volto al gra: do dote e:*

ta' punto non cu- ro voglio un cor che sia si:'

Handwritten musical notation on a single staff, featuring various note values and rests.

Handwritten musical notation on a single staff, featuring various note values and rests.

Handwritten musical notation on a single staff, featuring various note values and rests.

Handwritten musical notation on a single staff, featuring various note values and rests.

An empty musical staff.

An empty musical staff.

An empty musical staff.

An empty musical staff.

Handwritten musical notation on a single staff with lyrics: *cu : ro che mi serbi fedel : ta'*

Handwritten musical notation on a single staff, featuring various note values and rests.

Handwritten musical score consisting of ten staves. The notation includes various note values, rests, and dynamic markings. The lyrics "Dote e. ta punto non" are written across the lower staves.



*cù = ro voglio un cor che sia Si: cù: ro e che*

Handwritten musical notation on a single staff, featuring various note values and rests.

Handwritten musical notation on a single staff, featuring various note values and rests.

Handwritten musical notation on a single staff, featuring a whole note and a double bar line.

Handwritten musical notation on a single staff, featuring a whole note chord.

Handwritten musical notation on a single staff, featuring a whole note chord.

Handwritten musical notation on a single staff, featuring a whole note chord.

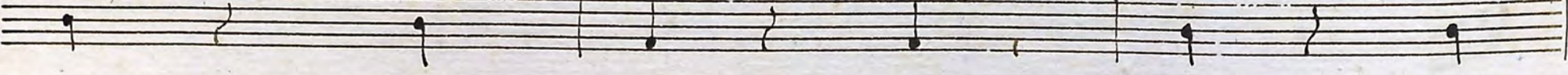
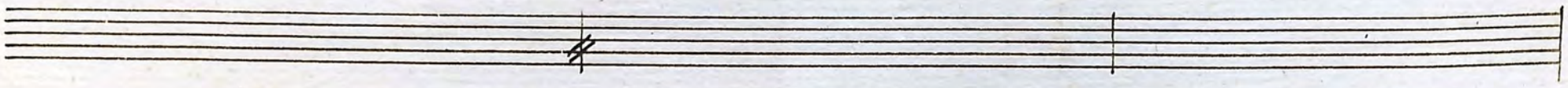
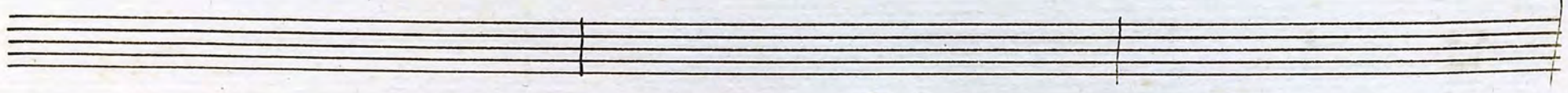
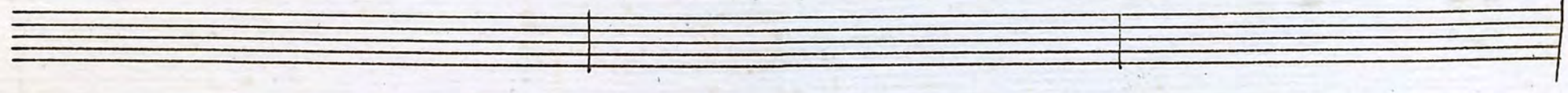
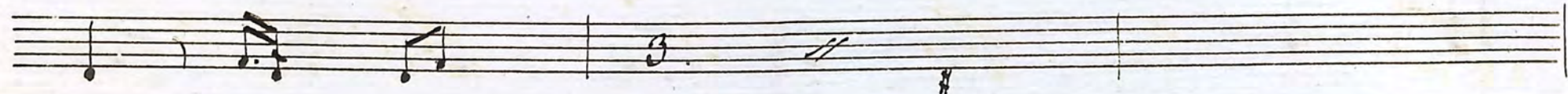
Handwritten musical notation on a single staff, featuring a whole note chord.

Handwritten musical notation on a single staff, featuring a whole note chord.

Handwritten musical notation on a single staff with lyrics "Serbi fedel: fa" written below it.

Handwritten musical notation on a single staff, featuring various note values and rests.

Handwritten musical score on ten staves. The top two staves contain vocal lines with notes and rests. The next two staves are empty. The fifth and sixth staves contain a piano accompaniment with chords and a 'sol.' section. The seventh and eighth staves are empty. The ninth and tenth staves contain a vocal line with lyrics: "questo core l'ho tro:".



Handwritten musical notation on a single staff, featuring chords and melodic lines with slurs.

Handwritten musical notation on a single staff, showing a sequence of chords and melodic fragments.

Handwritten musical notation on a single staff, consisting of three distinct chordal figures.

A blank musical staff with a double bar line at the end.

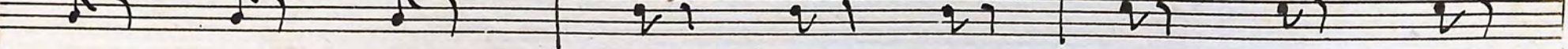
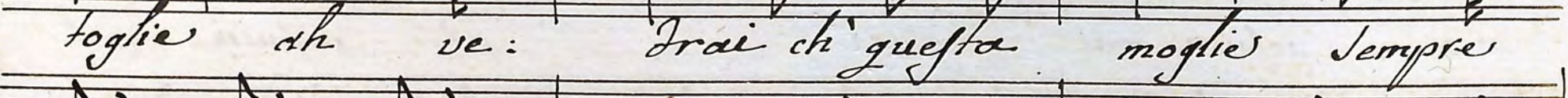
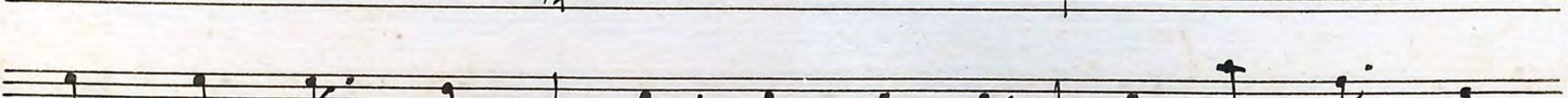
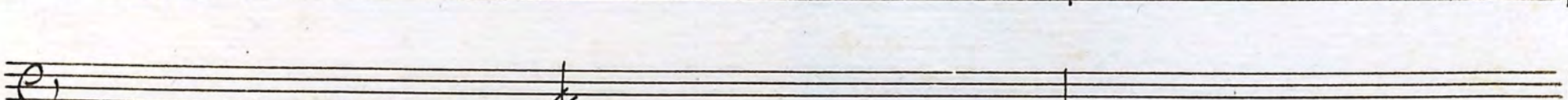
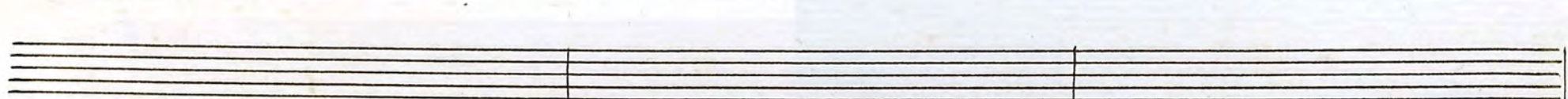
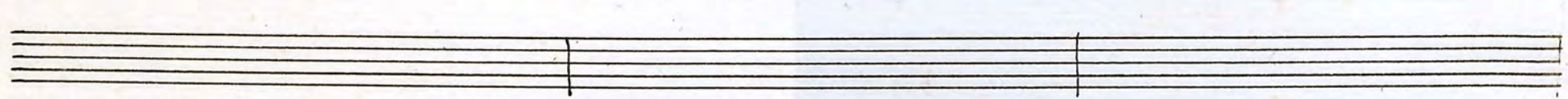
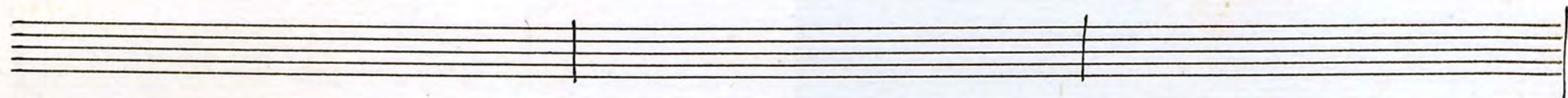
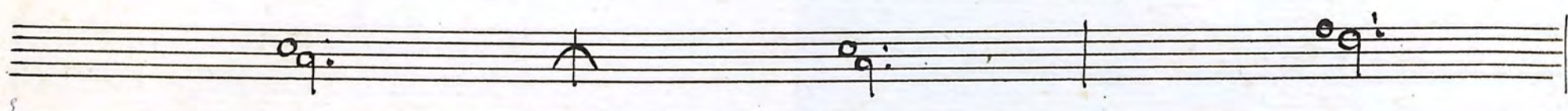
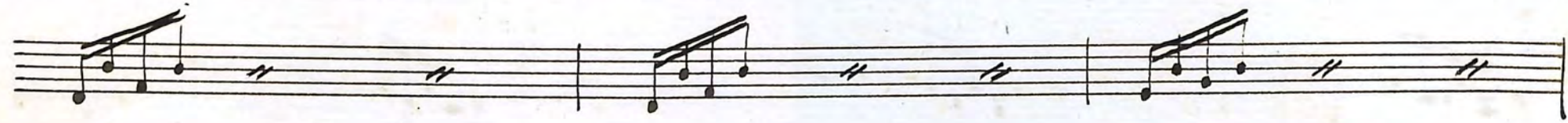
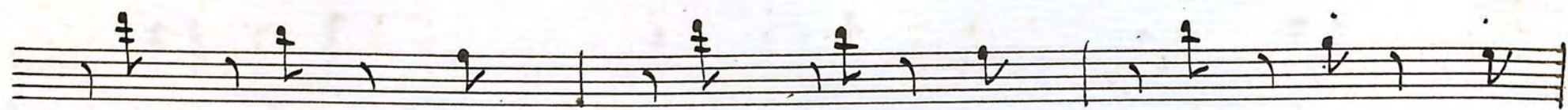
A blank musical staff with a double bar line at the end.

A blank musical staff with a double bar line at the end.

A blank musical staff with a double bar line at the end.

A blank musical staff with a double bar line at the end.

Handwritten musical notation with lyrics: *mio nessun mel toglie no' nessun mel*



*cara a me) Sa: ra' Si che questa*

*moglie sempre cara a me da: ra' io non*



*bado al volto al gra = do dote e: ta' punto non*

cu: ro voglio un un cor che sia si = curo che mi

Handwritten musical notation on a single staff, featuring various note values and rests.

Handwritten musical notation on a single staff, including a dynamic marking 'f'.

Handwritten musical notation on a single staff, showing a melodic line with a colon at the end.

Handwritten musical notation on a single staff, featuring a series of chords.

Handwritten musical notation on a single staff, with a dynamic marking 'p.'.

Handwritten musical notation on a single staff, showing a few notes.

Handwritten musical notation on a single staff, showing a few notes.

Handwritten musical notation on a single staff, showing a few notes.

Handwritten musical notation on a single staff, with lyrics 'Serbi' and 'jedel' written below.

Handwritten musical notation on a single staff, with lyrics 'ta' written below.

Handwritten musical notation on a five-line staff, featuring various note values and rests.

Handwritten musical notation on a five-line staff, featuring various note values and rests.

Handwritten musical notation on a five-line staff, featuring various note values and rests.

Handwritten musical notation on a five-line staff, featuring various note values and rests.

Handwritten musical notation on a five-line staff, featuring various note values and rests.

Handwritten musical notation on a five-line staff, featuring various note values and rests.

Handwritten musical notation on a five-line staff, featuring various note values and rests.

Handwritten musical notation on a five-line staff, featuring various note values and rests.

Handwritten musical notation on a five-line staff with lyrics written below the notes.

*Dotte e : ta punto non cu : ro voglio un*

Handwritten musical notation on three staves. The top staff contains a melody with quarter and eighth notes. The middle staff contains a similar melody. The bottom staff contains a bass line with a few notes and a large flourish.

Seven empty musical staves.

Handwritten musical notation with lyrics on two staves. The top staff has lyrics: "cor che sia si: cu = ro e die Serbi je: del." The bottom staff has a corresponding bass line.

Handwritten musical score for guitar and voice, measures 1-10. The score consists of ten staves. The first two staves are for guitar, featuring complex chordal textures with double and triple sharps. The next four staves are for voice, with lyrics written below the notes. The final two staves continue the guitar accompaniment. The notation includes various musical symbols such as notes, rests, and dynamic markings.

ta

non re: sisto a quel trafo

Handwritten musical score for guitar and voice, measures 11-12. The score consists of two staves. The top staff is for voice, with lyrics written below the notes. The bottom staff is for guitar, featuring a simple accompaniment. The notation includes notes, rests, and dynamic markings.

*porto*      *che mi*      *sprona ad abbrac:*      *ciarla*

Handwritten musical notation on a five-line staff, featuring various note values and rests.

Handwritten musical notation on a five-line staff, showing chords and rests.

Handwritten musical notation on a five-line staff, starting with a C-clef and a whole rest.

Empty five-line musical staff.

Empty five-line musical staff.

Handwritten musical notation on a five-line staff, consisting of three notes with stems and dots.

Empty five-line musical staff.

Empty five-line musical staff with a double bar line.

Handwritten musical notation on a five-line staff with lyrics "ah Ji vada a" and "CORR: 30:".

Handwritten musical notation on a five-line staff, showing rhythmic patterns.



Handwritten musical score for piano accompaniment, consisting of 10 staves. The notation includes various chords, arpeggios, and melodic lines. There are several double bar lines with repeat signs (//) indicating section breaks. The key signature has one sharp (F#) and the time signature is not explicitly shown but appears to be common time.

*Parla il ri :* *tardo e crudel: ta' e crudel :*

*f*

fa' e crudel:      fa' ah ve:      Irai che questa

mo = glie sempres cara a me sa = ra



Handwritten musical score for piano accompaniment, consisting of seven staves. The notation includes chords, arpeggios, and melodic lines with various ornaments and slurs.

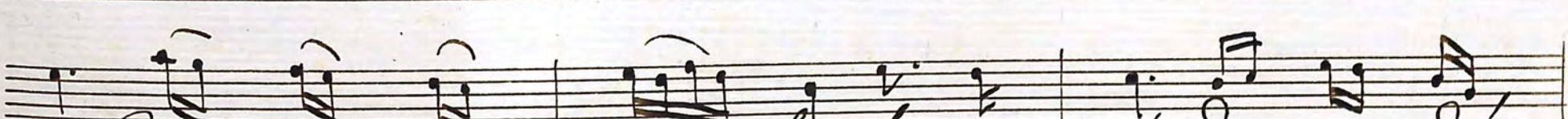
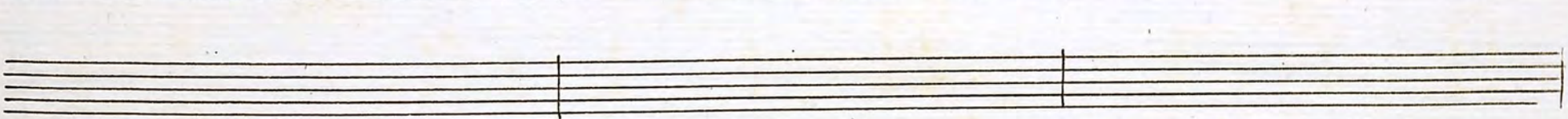
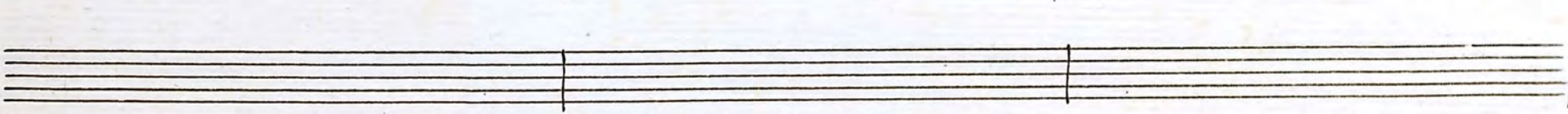
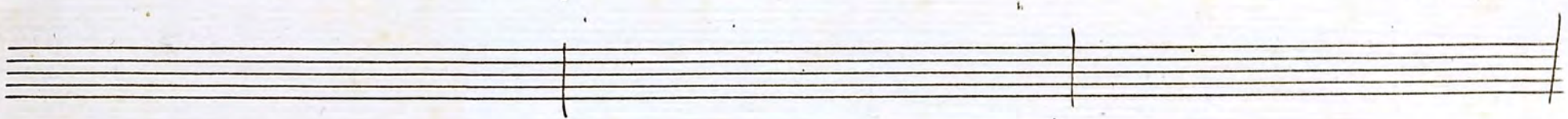
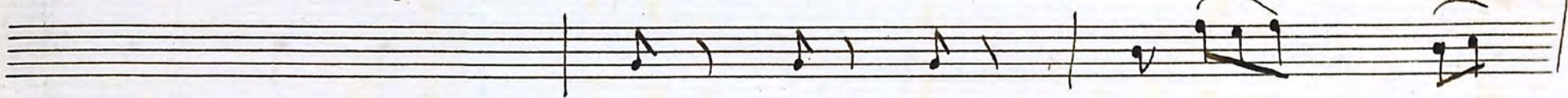
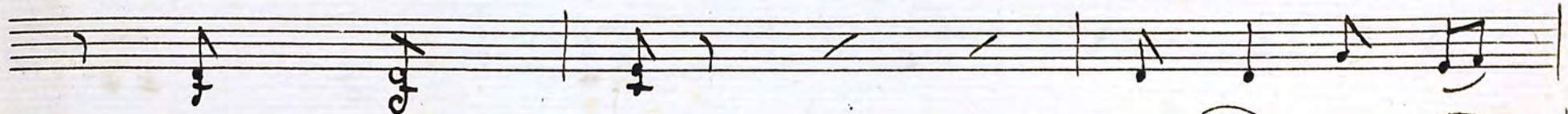
ra non re: sifto a qual tra: spporto che mi

Handwritten musical score for vocal line, consisting of two staves. The top staff contains the lyrics "ra non re: sifto a qual tra: spporto che mi" and the bottom staff contains the corresponding musical notation.

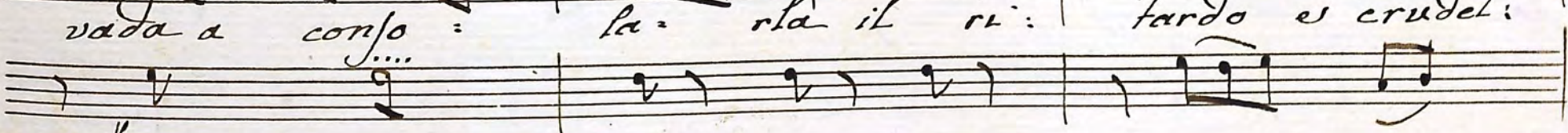
Handwritten musical score for piano accompaniment, consisting of eight staves. The notation includes chords, arpeggios, and melodic lines with various rhythmic values and accidentals.

*Soprano* ad abbrac: ciarla ad abbrac: ciarla ah si

Handwritten musical score for soprano vocal line, consisting of two staves. The first staff contains the lyrics "Soprano ad abbrac: ciarla ad abbrac: ciarla ah si" and the second staff contains the corresponding musical notation.



vada a conjo : la: rta il ri: tardo e crudel:



Handwritten musical notation on five staves. The first two staves contain rhythmic patterns of eighth and sixteenth notes. The third staff contains a sequence of notes, possibly a bass line. The fourth and fifth staves are empty.

Handwritten musical notation on two staves. The top staff features a melodic line with lyrics: *ta* followed by a series of notes, and then *cu : Del :*. The bottom staff contains a corresponding bass line.



Handwritten musical notation on a five-line staff, featuring eighth and sixteenth notes with stems.

Handwritten musical notation on a five-line staff, including a double bar line and a fermata-like symbol.

Handwritten musical notation on a five-line staff, showing a melodic line with eighth notes.

An empty five-line musical staff.

An empty five-line musical staff.

An empty five-line musical staff.

An empty five-line musical staff.

An empty five-line musical staff.

Handwritten musical notation on a five-line staff, including a double bar line, a fermata, and the text "ta" and "cru: del:".

Handwritten musical notation on a five-line staff, featuring a melodic line with eighth notes.

Handwritten musical notation on a five-line staff. It begins with a dynamic marking 'f' and contains several measures of music with slurs and various note values.

A five-line musical staff containing a single measure with a fermata and a double bar line.

A five-line musical staff containing a single measure with a fermata and a double bar line.

A five-line musical staff with notes and a dynamic marking 'f'.

A five-line musical staff with notes and a dynamic marking 'f'.

A five-line musical staff with notes and a dynamic marking 'f'.

A five-line musical staff with notes and a dynamic marking 'f'.

A five-line musical staff with notes and a dynamic marking 'f'.

A five-line musical staff with lyrics: *ta' ah si vada a conso: larla il re:'*

A five-line musical staff with notes and a dynamic marking 'f'.

Handwritten musical notation on a single staff, featuring complex rhythmic patterns and some crossed-out notes.

A blank musical staff with a double bar line.

A blank musical staff with a double bar line.

Handwritten musical notation on a single staff, showing chords and rests.

Handwritten musical notation on a single staff, showing chords and rests.

Handwritten musical notation on a single staff, showing chords and rests.

Handwritten musical notation on a single staff, showing chords and rests.

A blank musical staff with a double bar line.

*tardo e crudel: ta' ah si vada si*

Handwritten musical notation with lyrics: "tardo e crudel: ta' ah si vada si". The notation includes notes, rests, and some complex rhythmic figures.

Handwritten musical score for piano accompaniment, consisting of seven staves. The notation includes various chords, arpeggios, and melodic lines. There are some corrections and scribbles in the first staff.

*vada il ri: tardo e crudel: ta e*

Handwritten musical score for a vocal line, consisting of two staves. The first staff contains the lyrics "vada il ri: tardo e crudel: ta e" with notes above. The second staff contains the corresponding musical notation for the voice part.

*cru: del: ta' e = crudel*

Handwritten musical score on ten staves. The top staff begins with a treble clef and a dynamic marking 'f'. The bottom staff contains lyrics: 'fa si e crudel: fa'. The music includes various note values, rests, and complex chordal textures.

fa

si

e

crudel:

fa

f

Handwritten musical notation on a five-line staff. It begins with a treble clef and a key signature of one sharp (F#). The notation consists of several measures of music, including quarter notes, eighth notes, and a final measure with a fermata over a whole note.

Handwritten musical notation on a five-line staff. It features a treble clef, a key signature of one sharp, and a series of sixteenth-note runs. A fermata is placed over a measure, followed by a double bar line.

A five-line musical staff that is mostly empty, with a double bar line and a repeat sign (two diagonal slashes) indicating a section break.

Handwritten musical notation on a five-line staff. It starts with a treble clef and a key signature of one sharp. The notation includes quarter notes and a final measure with a fermata.

Handwritten musical notation on a five-line staff. It begins with a treble clef and a key signature of one sharp, followed by a series of quarter notes and a final measure with a fermata.

Handwritten musical notation on a five-line staff. It starts with a treble clef and a key signature of one sharp, featuring eighth notes and a final measure with a fermata.

Handwritten musical notation on a five-line staff. It begins with a treble clef and a key signature of one sharp, showing quarter notes and a final measure with a fermata.

A five-line musical staff that is mostly empty, with a double bar line and a repeat sign (two diagonal slashes) indicating a section break.

A five-line musical staff that is mostly empty, with a double bar line and a repeat sign (two diagonal slashes) indicating a section break.

Handwritten musical notation on a five-line staff. It starts with a treble clef and a key signature of one sharp, featuring sixteenth-note runs and a final measure with a fermata.

BM  
25

\* 360,000

