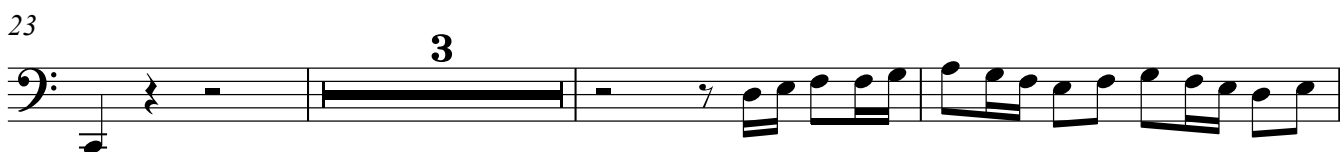
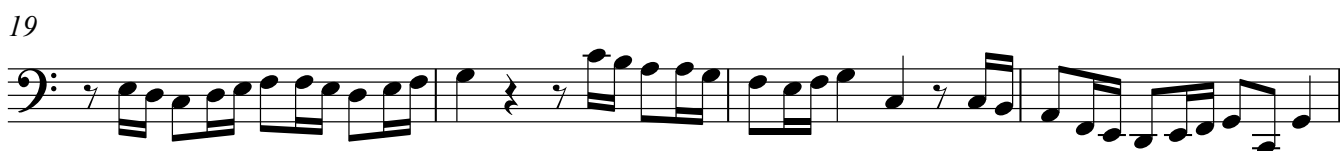


Fagotto

Machet die Tore weit

(Ms. Staats- und Universitätsbibliothek Dresden)

Johann Schelle
(1648-1701)




2

Fagotto

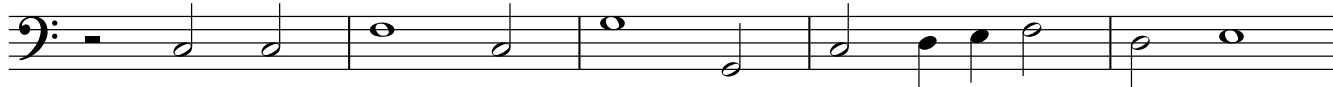
40

35

A musical staff in bass clef with a double bar line and repeat sign at the beginning, indicating the start of a section.

75 *Ritornello*

($\text{\textcircled{\text{S}}}$)

A musical staff in bass clef containing a series of notes and rests: a quarter rest, two eighth notes, a half note, a quarter note, a quarter note, a quarter note, a quarter note, a quarter note, and a quarter note.

80

Repeat 5 x.

A musical staff in bass clef containing a series of notes and rests: a quarter note, two eighth notes, a quarter note, a quarter note, a quarter note, a quarter note, a quarter note, a quarter note, a quarter note, a quarter note, and a dotted half note.

Machet die Tore weit da capo