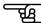


JOHANN
THEILE
(1646 - 1724)

DIE SEELE CHRISTI
HEILIGE MICH

FOR CANTO, 3 VIOLAS AND CONTINUO

Typeset using LilyPond by Rémy CLAVERIE (remy.claverie@orange.fr) and corrected by Xavier CLAVERIE-ROSPIDE .
This music score has been placed in the public domain by the typesetter under the Creative Commons Licence.
Any comment or error indications are welcome. As well, an email when this score is used (concerts, recordings, etc.) would be appreciated.
The lilypond source file is available on request to the typesetter.

This score has been transcribed from the digitised facsimile of the Duben collection (vmhs 035:017). 



DIE SEELE CHRISTI HEILIGE MICH

JOHANN THEILE

Sinfonia

VIOLA I

VIOLA II

VIOLA III

CONTINUO

7

Va. I

Va. II

Va. III

CONT.

Aria

CANTO

CONTINUO

Die See - le Chris - ti hei - li - ge mich, der Leichnam Chris -

6

C.

CONT.

ti er - hal - - te mich, das Blut Chris - ti trän - cke mich, das

12

VA. I
VA. II
VA. III
C.
CONT.

Was - ser, das aus seiner Sei-ten floß, wa - - - sche mich.

6/5 6/5 6/4 5# 2 3

16

VA. I
VA. II
VA. III
C.
CONT.

Die See - le Chris - ti hei - - li - ge

2 5 b 5 5 6 5

20

VA. I
VA. II
VA. III
C.
CONT.

mich, der Leich-nam Chris - ti er -

6 6 7 6

25

VA. I

VA. II

VA. III

C.

CONT.

hal - - - te mich, das Blut Chris -

6 7 6 2 3 2 3

29

VA. I

VA. II

VA. III

C.

CONT.

ti trän - - cke mich, das Was - ser,

5 b 4 # #

33

VA. I

VA. II

VA. III

C.

CONT.

das aus sei-ner Sei-ten floß, wa - - - - - sche mich.

6 4 5 # b

36

VA. I

VA. II

VA. III

C.

CONT.

O gü - ti - ger Je - su, o gü - ti - ger Je - su, er -

40

VA. I

VA. II

VA. III

C.

CONT.

hö - re mich, er - hö - re mich.

44

VA. I

VA. II

VA. III

C.

CONT.

In dei - ne hei - li - ge fünf Wun - den ver -

47

VA. I

VA. II

VA. III

C.

bir - ge mich, in der Stun-de mei-nes To-des be-gna - de mich, o gü - ti-ger

CONT.

51

VA. I

VA. II

VA. III

C.

Je - su, er - hö - re mich,

CONT.

54

VA. I

VA. II

VA. III

C.

in dei - ne hei - li-ge fünf Wun-den ver - bir - ge mich,

CONT.

57

VA. I

VA. II

VA. III

C.

in der Stunde mei-nes To - des, in der Stunde mei-nes To - des be-

CONT.

6 6 4 # #

61

VA. I

VA. II

VA. III

C.

gna - de mich, und se-tze mich zu dir, und se-tze mich zu dir, auf das

CONT.

6 6 4 # b 7 6 4 3 4 # # b

65

VA. I

VA. II

VA. III

C.

ich samt dei-nen hei-li-gen En - geln und au-ßer wel-ten dich lo - - ben mö-ge

CONT.

6 6

68

VA. I

VA. II

VA. III

C.

E - wi-glich.

CONT.

71

VA. I

VA. II

VA. III

C.

O gü - ti-ger Je - su, er-hö - re mich, er-hö - re

CONT.

75

VA. I

VA. II

VA. III

C.

mich, und se-tze mich zu dir, und se-tze mich zu dir, auf das ich samt deinen

CONT.

79

VA. I

VA. II

VA. III

C.

CONT.

hei - li - gen En - geln und au - ßer wel - ten dich lo - - - ben mö - ge E - wi -

82

VA. I

VA. II

VA. III

C.

CONT.

glich.

85

VA. I

VA. II

VA. III

C.

CONT.

A - - - - - men, A - - - - - men,

88

VA. I

VA. II

VA. III

C.

CONT.

A - - - - men, A - - - -

5 3 6/4 5/3 b 6

91

VA. I

VA. II

VA. III

C.

CONT.

men, A - - - - men, A - - - - men.

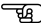
b 4

Typeset using LilyPond by Rémy CLAVERIE (remy.clavierie@orange.fr) and corrected by Xavier CLAVERIE-ROSPIDE .

This music score has been placed in the public domain by the typesetter under the Creative Commons Licence.

Any comment or error indications are welcome. As well, an email when this score is used (concerts, recordings, etc.) would be appreciated.

The lilypond source file is available on request to the typesetter.

This score has been transcribed from the digitised facsimile of the Duben collection (vmhs 035:017). 



Next pages should be printed on one side only

DIE SEELE CHRISTI HEILIGE MICH
Continuo

JOHANN
THEILE

Sinfonia

6 7 6 $\frac{4+}{2}$ 6 7 6 7 $\frac{6}{5}$ #

7 \flat 7 $\frac{6}{5}$ 4 # # \flat # 7 7 6 $\frac{5}{4}$ 5 #

Aria

6 2 3 5 6 5 \flat 6 7 6 2 4 6 6 6 $\frac{6}{5}$ 4 #

11 $\frac{6}{5}$ $\frac{6}{5}$ $\frac{6}{4}$ 5 # 2 3 2 5 \flat 5 5 6 5

22 6 6 7 6 6 7 6 2 3 2 3 5 \flat 4 # #

32 $\frac{6}{4}$ 5 # \flat 4 # # \flat 6 5 # 6 5 # 6 7 6 6 7 6 # \flat

42 $\frac{6}{5}$ # *p* $\frac{6}{5}$ # *f* 6 7 6 # *p* 6 7 6 # \flat 6 $\frac{6}{5}$ 4 3 # 6 $\frac{6}{5}$ 4 # \flat 6

51 5 6 7 6 \flat 6 $\frac{6}{5}$ 4 # 4 # # # # 6 $\frac{6}{5}$ 4 # #

60 $\frac{6}{5}$ 4 # \flat 7 6 4 3 4 # # \flat 6 6 4 #

69 *p*

6 4 3 6 5 6 7 6 # 6 7 6 # 6 7 6 5 4 #

77

6 5 4 # # b 4 # b 4 # b

87

6 5 3 3 6 4 3 b 6 # b 4

DIE SEELE CHRISTI HEILIGE MICH
Viola I - G key

JOHANN
THEILE

Sinfonia

Musical notation for the Sinfonia section, consisting of two staves of music in G major and 3/4 time.

Aria

Musical notation for the Aria section, including vocal lines and piano accompaniment with lyrics.

12 Sop.
... Seiten floß, wa - - - sche mich.

18 *tr*

23 2

30

35 3

42 *p* *f* *p* 6

52

57

62 3

70

74 *p* *tr* 3

82

86

90

DIE SEELE CHRISTI HEILIGE MICH
Viola I

JOHANN
THEILE

Sinfonia

Musical notation for the Sinfonia section, consisting of two staves in bass clef with a key signature of one sharp (F#) and a common time signature (C). The first staff contains measures 1-6, and the second staff contains measures 7-11.

Aria

Musical notation for the Aria section, featuring a vocal line and a viola line. The vocal line starts at measure 12 with the lyrics "Sop. ... Seiten floß, wa - - - sche mich." and includes dynamics like *p* and *f*. The viola line includes various ornaments and dynamics.

70

74 *p* *tr* 3

82

86

90

Detailed description: This image shows five staves of musical notation in treble clef with a key signature of one sharp (F#). The first staff (measures 70-73) features a melodic line with eighth and sixteenth notes. The second staff (measures 74-81) includes a piano (*p*) dynamic marking, a trill (*tr*) over a dotted quarter note, and a triplet of eighth notes. The third staff (measures 82-85) continues the melodic development. The fourth staff (measures 86-89) shows a sequence of quarter notes. The fifth staff (measures 90-93) concludes with a final cadence, including a fermata over a whole note.

DIE SEELE CHRISTI HEILIGE MICH

Viola II

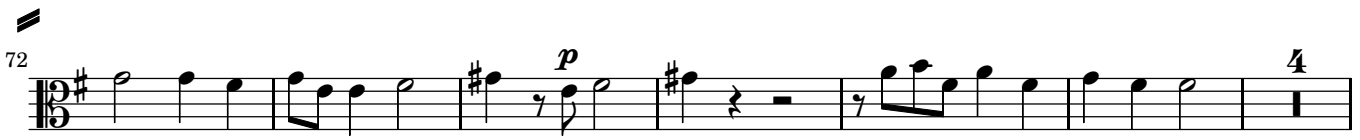
JOHANN

THEILE

Sinfonia



Aria



82

2

89

DIE SEELE CHRISTI HEILIGE MICH

Viola III

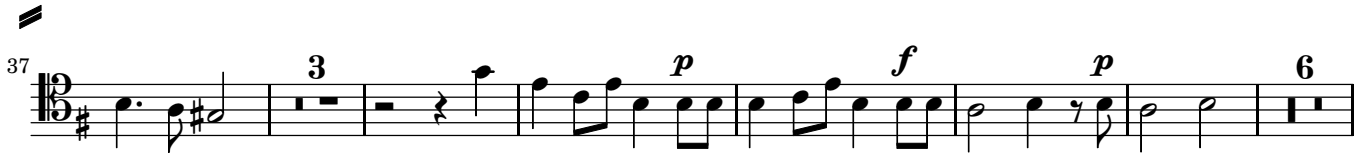
JOHANN

THEILE

Sinfonia



Aria



77

4

88

||#