
Johann
Theile

(1646 - 1724)

Was betrübst du dich,
meine Seele

For Alto solo, 3 Viole da braccio, Violono (vel Fagotto) and Continuo

A project by



for

La Compagnie des Humbles

Typesetted using LilyPond by Rémy Claverie (remy.claverie.AT.orange.fr). This music score has been placed in the public domain by the typesetter under the Creative Commons Licence.

This score has been transcribed from the facsimile of the Dresden, Sächsische Landesbibliothek (Mus.1856-E-500) and corrected by members of AUBE MUSIQUE ANCIENNE (Xavier Claverie-Rospide) ; If available, this manuscript can be downloaded by clicking on the logo below.

[Any comment or error indications are welcome.](#) As well, an email when this score is used (concerts, recordings, etc.) would be appreciated.

The lilypond source file is available on request to the typesetter.

Was betrübst du dich, meine Seele

Johann Theile
(1646 - 1724)

Symphonia

Viola (Violino)
Viola (Viola)
Viola (Viola)
Violono (ò vero Fagotto)
Organo Continuo

6 7 6 5 6 5 7 6 5 7 6 5

Va. I
Va. II
Va. III
Vne.
Org. Cont.

6 9 8 7 6 5 4 # # b 6 7 6 # 6 b 5 4 # #

Aria

Viola (Violino)
Viola (Viola)
Viola (Viola)
Violono (ò vero Fagotto)
Alto
Organo Continuo

Was be - trübst du dich, mei - ne See -

b b 7 6 5 4 # b 7 5 4 #

5

Va. I

Va. II

Va. III

Vne.

A.

le, und bist so un - ru - hig in

Org. Cont.

b 6 \flat 4 5 # b 6 5 \flat # b

9

Va. I

Va. II

Va. III

Vne.

A.

mir? und bist so un - ru - hig in mir? was be - trübst du dich,

Org. Cont.

7 6 # b 6 \flat 4 5 #

13

Va. I

Va. II

Va. III

Vne.

A.

mei - ne See - le, und bist so un - ru - hig, und bist so un - ru - hig in mir?

Org. Cont.

b 7 5 4 # b 6 5 # b 6

17

Va. I

Va. II

Va. III

Vne.

A.

Org. Cont.

was be - trübst du dich, mei - ne See - le, Har - re,

21

Va. I

Va. II

Va. III

Vne.

A.

Org. Cont.

har - re auf Gott!

24

Va. I

Va. II

Va. III

Vne.

A.

Org. Cont.

har - re, har - re auf Gott! har - re, har - re auf Gott!

27

A.
 denn ich wer - de ihm noch dan - - - - -

Org. Cont.

29

A.
 - - ken, daß er mei - nes An - ge - sich - tes Hil - fe, daß er mei - nes An - ge - sich - tes

Org. Cont.

32

A.
 hil - fe, und mein Gott ist, denn ich wer - de ihm noch dan - - - - -

Org. Cont.
 6 5^b b

35

A.
 - - ken, daß er mei - nes An - ge - sich - tes Hil - fe, und mein Gott, mein Gott

Org. Cont.
 6 b b 6/4 5/4 #

38

Va. I

Va. II

Va. III

Vne.

A.
 ist. Was be - trübst du dich, mei - ne See - le, und bist so un -

Org. Cont.
 # b 6/4 5 # 6/4 5 # # b # #

44

Va. I

Va. II

Va. III

Vne.

A.

Org. Cont.

ru - - - hig in mir? Har-re, har-re auf Gott! har-re, har-re auf

7 6 7 6 # 6

50

Va. I

Va. II

Va. III

Vne.

A.

Org. Cont.

Gott! denn ich wer-de ihm noch

6 6 #

54

Va. I

Va. II

Va. III

Vne.

A.

Org. Cont.

dan - - ken, daß er mei-nes An-ge-sich-tes Hil-fe, und mein Gott ist, daß er

7 #

57

Va. I

Va. II

Va. III

Vne.

A.

Org. Cont.

mei - nes An - ge - sich - tes Hil - fe, und mein Gott ist.

60

Va. I

Va. II

Va. III

Vne.

A.

Org. Cont.

A - - - - - men, A - - - - - men, A -

63

Va. I

Va. II

Va. III

Vne.

A.

Org. Cont.

men, A - - - - - men, A - men, A - - - - -

67

Va. I

Va. II

Va. III

Vne.

A.

Org. Cont.

- [men, A] - men, A - - - - men,

$\frac{5}{4}$ # #

70

Va. I

Va. II

Va. III

Vne.

A.

Org. Cont.

A - - - - men, A - men,

6 7 6

73

Va. I

Va. II

Va. III

Vne.

A.

Org. Cont.

A - - - - men, A - men, A - - - - [men, A] - men,

6 6 # # 6 $\frac{5}{4}$ # #

77

Va. I

Va. II

Va. III

Vne.

A.

Org.
Cont.

A - - - - - men.

b #

Typeset using LilyPond with Frescobaldi by Rémy Clavierie (remy.clavierie.AT.orange.fr) and corrected
by members of AUBE MUSIQUE ANCIENNE (Xavier Clavierie-Rospide) .
This music score has been placed in the public domain by the typesetter under the Creative Commons Licence.



Next pages should be printed on one side only

Was betrübst du dich, meine Seele

— Continuo —

Johann Theile

Sonata

Measures 1-6 of the Sonata. Bass clef, common time. Fingerings: ♭, #, ♭, 7, 6/4, 5, 6, ♭5, 7, 6/4, 5.

7

Measures 7-10 of the Sonata. Bass clef, common time. Fingerings: 6, 9, 8, 7, 6, 5/4, #, #, ♭, 6, 7, 6, #, 6, ♭, 5/4, #, #.

Aria

Measures 1-10 of the Aria. Bass clef, common time. Fingerings: ♭, ♭, 7, 6, 5/4, #, ♭, 7, 5/4, #, ♭, ♭6, 5, ♭, 6, #, ♭, 7, 6, #.

11

Measures 11-19 of the Aria. Bass clef, common time. Fingerings: ♭, ♭6, 5, ♭, 7, 5/4, #, ♭, 6, #, ♭, 6, 5, 5, #, ♭, 6, #, ♭.

20

Measures 20-28 of the Aria. Treble clef, 6/4 time. Fingerings: ♭, ♭, ♭, ♭.

29

Measures 29-37 of the Aria. Bass clef, common time. Fingerings: 6, ♭5, ♭, 6, ♭, ♭, 6, 5/4, #.

38

Measures 38-46 of the Aria. Bass clef, 3/2 time. Fingerings: #, ♭, 6/4, 5, #, 6/4, #, #, ♭, #, #, 7, 6.

47

Measures 47-54 of the Aria. Bass clef, common time. Fingerings: 7, 6, #, 6, 6, 6, 5/6, #.

55

Measures 55-61 of the Aria. Bass clef, common time. Fingerings: 7, #, ♭, #, 6.

62

Measures 62-67 of the Aria. Bass clef, common time. Fingerings: 6, 7, 6, 6, 6, #, #, 6, 5/4, #, #.

68

Measures 68-73 of the Aria. Treble clef, common time. Fingerings: 6, 7, 6, 6, 6, 6.

74

Measures 74-78 of the Aria. Bass clef, common time. Fingerings: #, #, 6, 5/4, #, #, ♭, #.



Was betrübst du dich, meine Seele

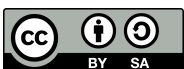
— Viola I (Violino) —

Johann Theile

Sonata



Aria



Was betrübst du dich, meine Seele

— Viola II —

Johann Theile

Sonata



7



Aria



12



19



26



43



51



57



63



70



76



Was betrübst du dich, meine Seele

— Viola III —

Johann Theile

Sonata



7



Aria



15



23



41



51



60



67



75



Was betrübst du dich, meine Seele

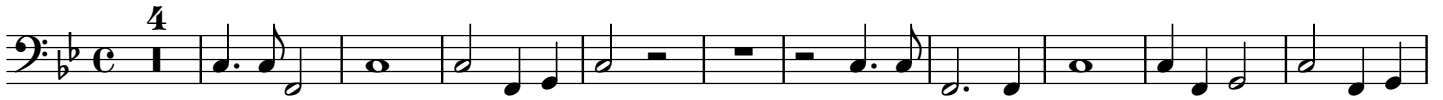
— Violono (vel Fagotto) —

Johann Theile

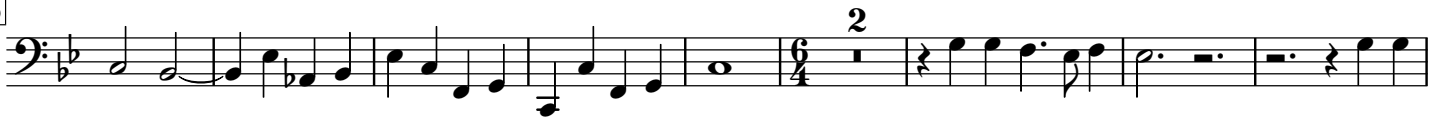
Sonata



Aria



15



25



46



54



62



69



75

